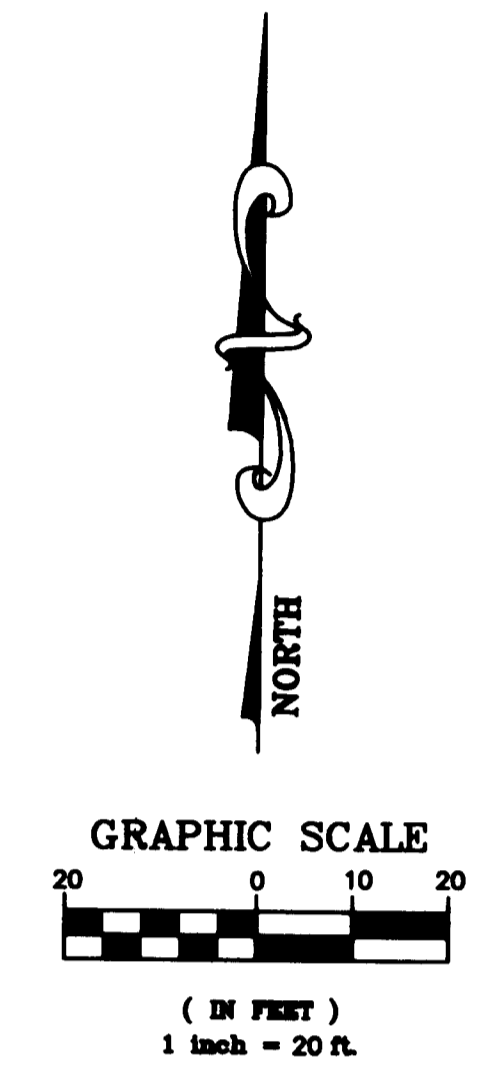
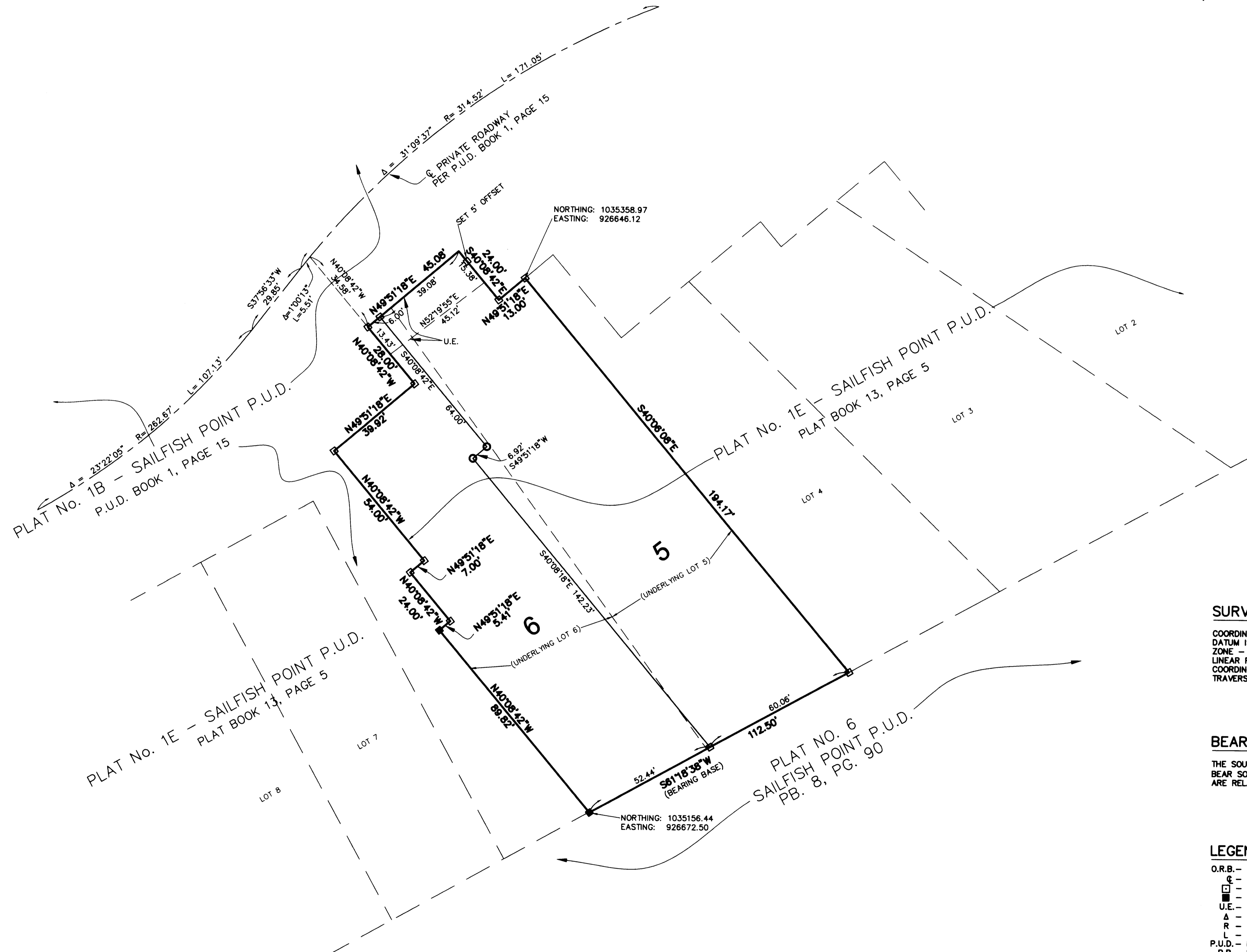


PLAT NO. 1F - SAILFISH POINT P.U.D.

BEING A REPLAT OF LOTS 5 AND 6, PLAT NO. 1E - SAILFISH POINT P.U.D.
 AS RECORDED IN PLAT BOOK 13, PAGE 5, PUBLIC RECORDS OF MARTIN COUNTY, FLORIDA
 LYING IN PART OF FRACTIONAL SECTION 8, TOWNSHIP 38 SOUTH, RANGE 42 EAST, MARTIN COUNTY, FLORIDA



SURVEYOR'S NOTE:

COORDINATES SHOWN HEREON ARE GRID.
 DATUM IS NAD 83, 1990 ADJUSTMENT.
 ZONE - FLORIDA EAST
 LINEAR FOOT - U.S. SURVEY FOOT
 COORDINATE SYSTEM IS 1983 STATE PLANE
 TRAVERSE MERCATOR PROJECTION

BEARING BASE:

THE SOUTH LINE OF PLAT NO. 1E - SAILFISH POINT P.U.D. IS TAKEN TO BEAR SOUTH $61^{\circ}18'38''$ WEST AND ALL OTHER BEARINGS SHOWN HEREON ARE RELATIVE THERETO.

LEGEND:

- O.R.B. - OFFICIAL RECORDS BOOK
- C - CENTERLINE
- - 4"x4" CONCRETE P.R.M. (PERMANENT REFERENCE MONUMENT) SET NO. LB 959
- - 4"x4" CONCRETE P.R.M. (PERMANENT REFERENCE MONUMENT) FOUND NO. PLS 2633
- U.E. - UTILITY EASEMENT PER PLAT BOOK 13, PAGE 5
- Δ - CURVE DELTA ANGLE
- R - RADIUS
- L - ARC LENGTH
- P.U.D. - PLANNED UNIT DEVELOPMENT
- P.B. - PLAT BOOK
- PG. - PAGE
- - SET 5/8" IRON ROD AND CAP

THIS PLAT, AS RECORDED IN ITS ORIGINAL FORM IN THE PUBLIC RECORDS, IS THE OFFICIAL DEPICTION OF THE SUBDIVIDED LANDS DESCRIBED HEREON AND WILL IN NO CIRCUMSTANCES BE SUPPLANTED IN AUTHORITY BY ANY OTHER FORM OF THE PLAT, WHETHER GRAPHIC OR DIGITAL. THERE MAY BE ADDITIONAL RESTRICTIONS THAT ARE NOT RECORDED ON THIS PLAT THAT MAY BE FOUND IN THE PUBLIC RECORDS OF THIS COUNTY.

CONSULTING CIVIL ENGINEERS, SURVEYORS & MAPPERS
"Partners For Results. Value By Design"
 3550 S.W. Corporate Parkway, Palm City, Florida 34990
 (772) 286-3863 Fax: (772) 286-3825
 BPR & FBPE License No: 959 www.lbfh.com